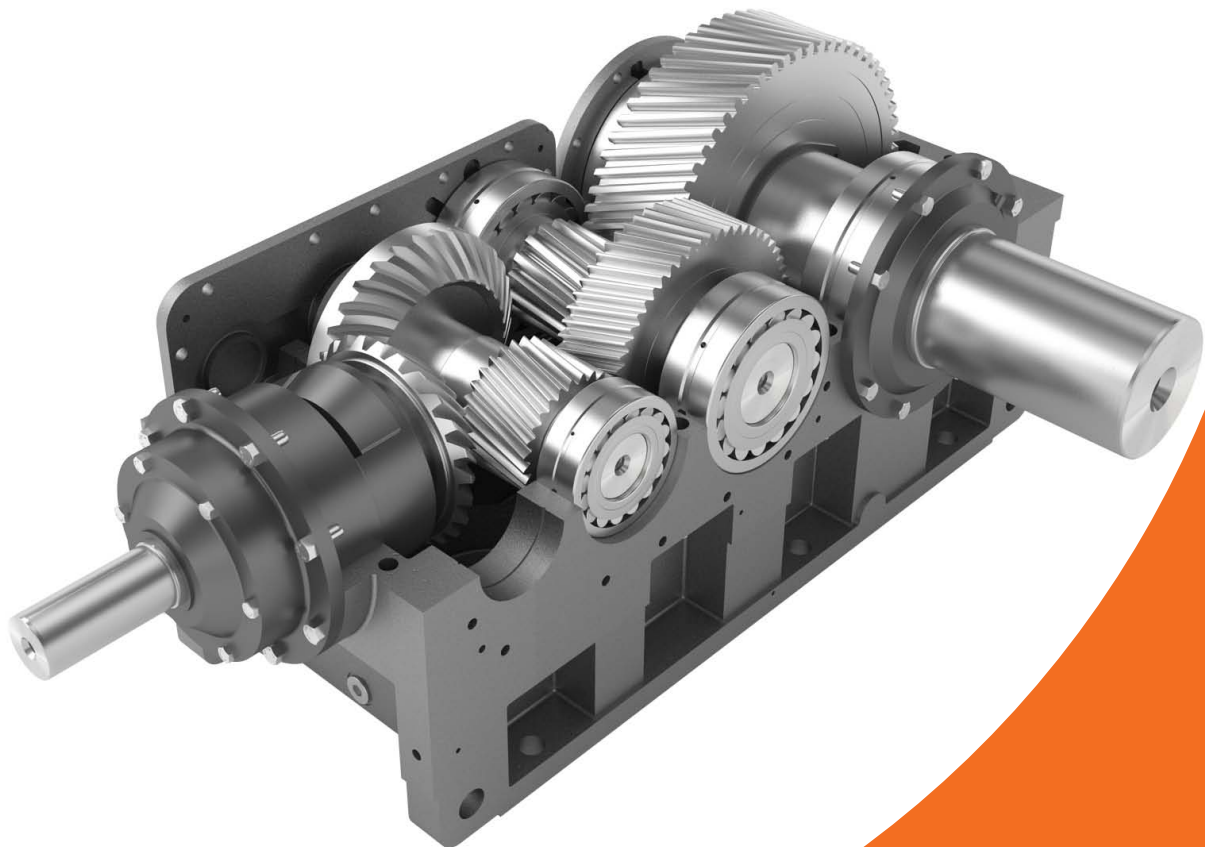


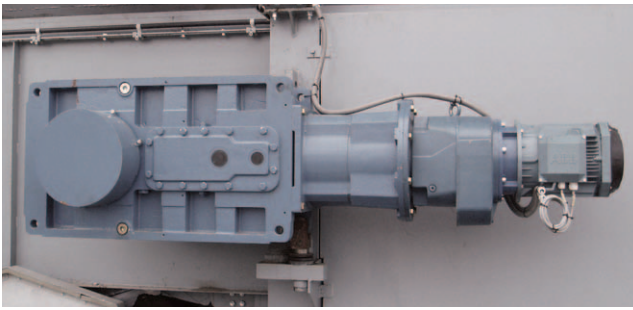
benzlers 

with you at every turn

Series G



Series G



PRODUCT INFORMATION

The Series G helical industrial gearbox is designed to meet the requirements of the most demanding applications in the medium and heavy-duty sectors of the power transmission market.

The modular design and construction of the Series G offers many engineering and performance benefits including a high degree of interchangeability of parts and sub assemblies. This in turn provides considerable economies of production whilst maintaining the highest standard of component integrity.

Unit Sizes:

14, 15, 16, 17, 18, 19, 21, 22

Input Power:

Up to 1,500kW

Output Torque:

Up to 162,000Nm

Gear Ratios:

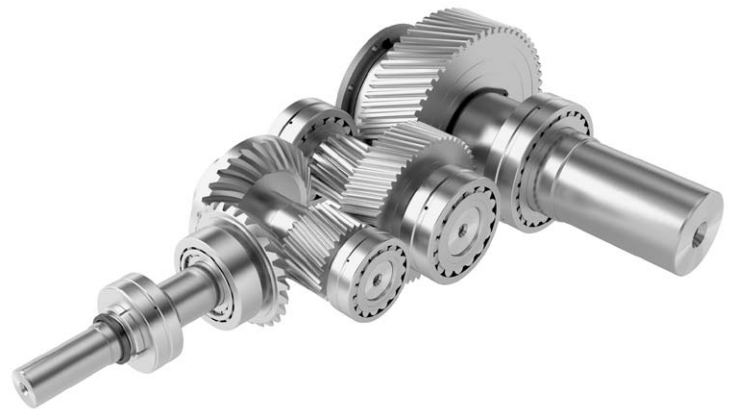
6.3/1 to 315/1/1 in multistage,
up to 70000/1 in combined form

Output Shaft:

Up to 240mm diameter

Motor Sizes:

IEC Frames from 200 to 315



FEATURES

Split case design

Lip, Labyrinth and Face Seal on input, Lip Seal and Labyrinth on output shaft

Vertical units have a Drywell sealing arrangement

Spherical roller bearings throughout (tapers roller bearings on bevel pinion shaft)

Large diameter output shaft, higher over hung loads

Hollow bore and shrink disc options gives versatility in mounting

External hold back, allows for inspection

Atex compliant

BENEFITS

Ease of maintenance and in situ repair

Better sealing for harsher environments

No head of oil resting on the output seal

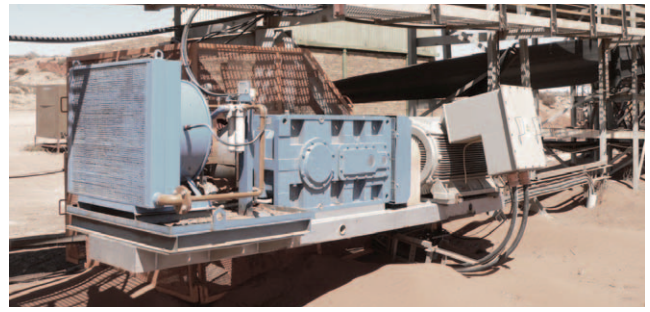
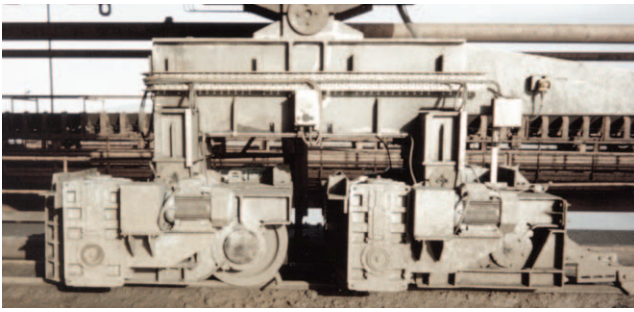
Provides longer life

Best option for stirrer applications

Hollow bore reduces alignment issues

Reduced down time

Can be supplied against Group 2 or 3 for surface industries in designated Hazardous locations, Zones 1 and 2 for gases, vapours and mists and Zones 21 and 22 for dust.



INTELLIGENT DESIGN

The Series G gear tooth geometry design combines maximum efficiency with high load carrying capacity and minimal noise generation. Serviceability of the product was key in the design of the Series G range guaranteeing durability, reliability and minimal downtime.

DROP IN REPLACEMENT CAPABILITIES

Our “design and supply” service enables us to supply a new drive assembly to fit directly in place of your existing equipment, we can re-use your existing motors and couplings where appropriate.

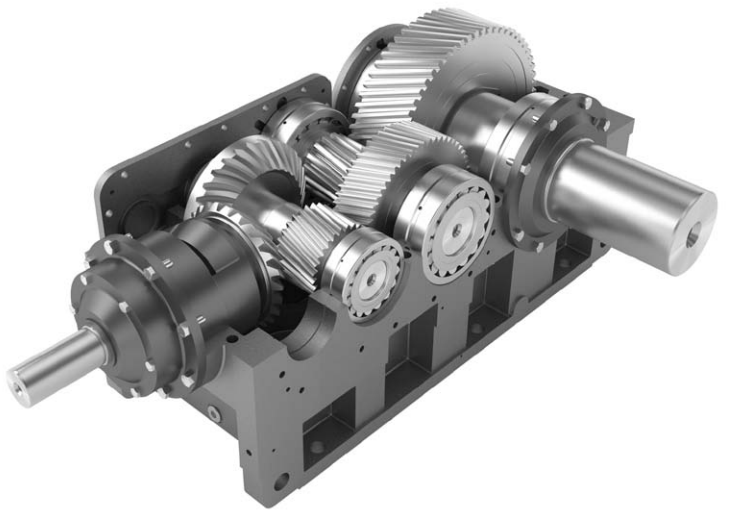
SPLIT CASE DESIGN FOR EASE OF MAINTENANCE

Allows for onsite inspection and maintenance eliminating costly downtime and loss of production.

HIGH SPECIFICATION SEAL DESIGN

The series G incorporates a triple-sealing system for minimum possible maintenance, keeps operating costs low and ensures longevity of service.

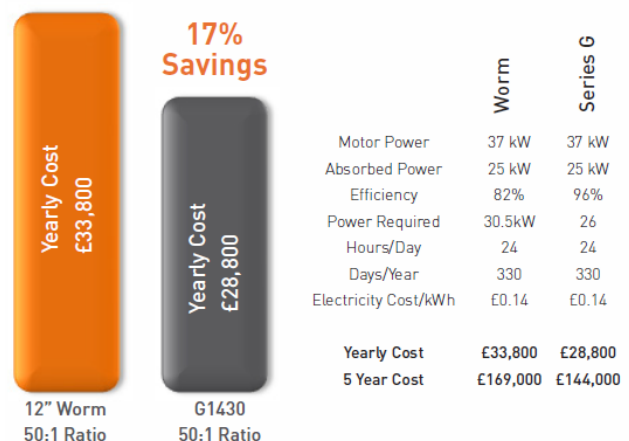
- Face seal – to keep out dust.
- Labyrinth seal – grease packed to prevent ingress of dirt.
- Lip seal – to prevent oil leaving the box.



SERIES G OFFERS A 17% YEARLY SAVING WHEN USED INSTEAD OF HIGH RATIO INEFFICIENT WORM GEARS

If you are still using a worm gear in certain situations the chances are your system is running inefficient, even if you have, or will upgrade to a high efficient IE2 motor. The motor equates for only 10% of possible efficiency savings compared to the gearbox which can offer up to 60% of efficiency savings.

THE SERIES G OFFERS A £5,000 A YEAR ELECTRICITY SAVING



Benzlers believes in engineering quality relationships with our customers that strengthen what we can achieve together. Our business and the people within our business are committed to building long lasting partnerships that are as reliable as our products and as smooth as our service.

Benzlers and sister company Radicon are now part of Elecon Engineering, Asia's largest and fastest growing gear manufacturer. This partnership means that we can offer our customers an enhanced range of standard and bespoke engineering solutions including drop in replacements, all supplied with the product quality and engineering expertise demanded from and delivered by the Benzlers business.

Benzlers - with you at every turn

benzlers 

radicon 

Benzlers

Denmark +45 36 340300

Finland +358 9 3401716

Germany +49 800 3504000

Italy +39 02 8243511

Sweden +46 42186800

The Netherlands +31 77 3245900

www.benzlers.com

Radicon

Thailand +66 3845 9044

United Kingdom +44 1484 465800

USA +1 847 5939910

www.radicon.com